

# PRORIL

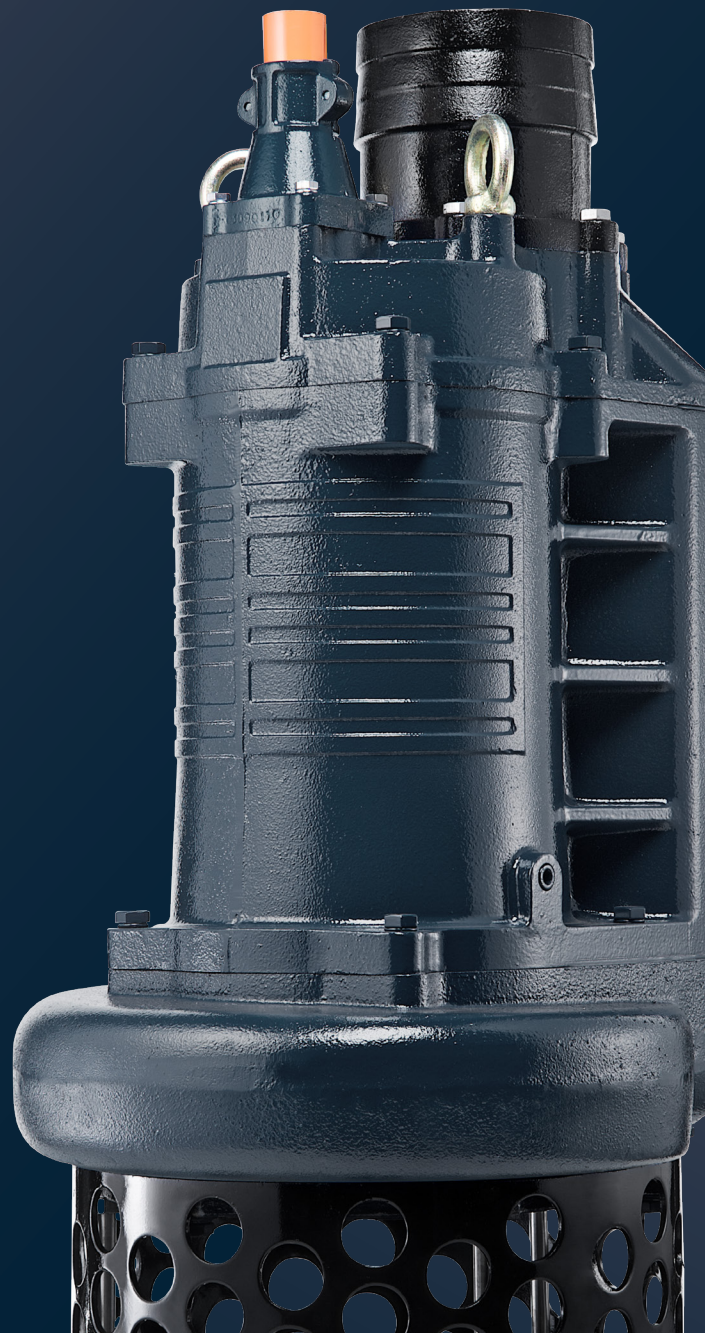
50Hz

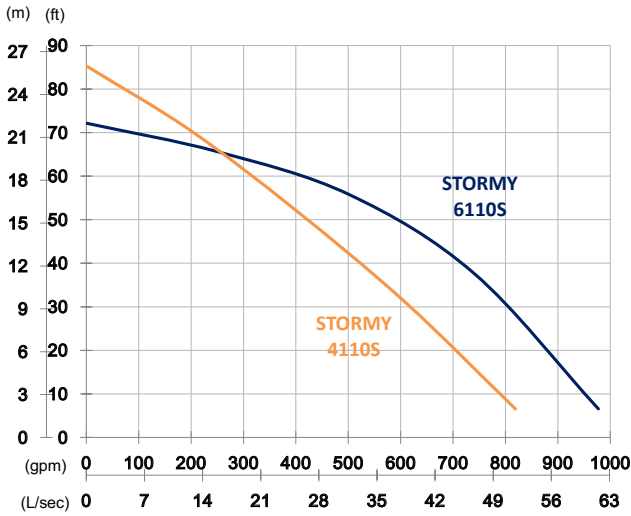
Serving a wide range of slurry transport applications, STORMY-S series pumps are designed for long wear life, low energy consumption, excellent performance, and easy maintenance. With patented ACrS Tech and rugged construction, these abrasion and corrosion resistant slurry pumps provide economical solutions for challenging slurry transportation.

## Slurry and Sand Pump

# STORMY 4110S/6110S

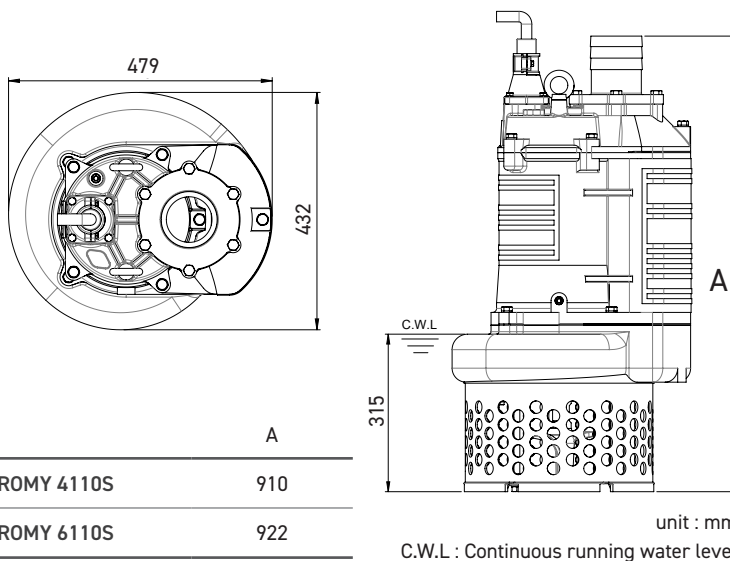
### Strainer and Agitator Pump





|               | STORMY 4110S                   | STORMY 6110S                     |
|---------------|--------------------------------|----------------------------------|
| OUTPUT        | 11 kW (15 HP)                  | 11 kW (15 HP)                    |
| OUTLET        | 4" (100 mm)                    | 6" (150 mm)                      |
| SOLID PASSAGE | 25 mm                          | 35 mm                            |
| Weight        | 199 kg                         | 200 kg                           |
| HEAD          | Rated: 16 m<br>Max: 26 m       | Rated: 17 m<br>Max: 22 m         |
| FLOW          | Rated: 25 L/s<br>Max: 51.6 L/s | Rated: 31.7 L/s<br>Max: 61.7 L/s |

|                         |                             |                                   |
|-------------------------|-----------------------------|-----------------------------------|
| Pump Type               |                             | Electric Submersible Pumps        |
| Motor                   | Phase                       | 3-Phase                           |
|                         | Type                        | Induction Motor                   |
|                         | Poles                       | 4 Pole (1450 rpm)                 |
|                         | Insulation                  | Class F                           |
|                         | Protector                   | Circle Thermal Protector          |
|                         | Starter                     | D.O.L.                            |
| Lubricant               |                             | Food Grade (ISO VG32)             |
| Specs.                  | Impeller Type               | Opened                            |
|                         | Shaft Seal                  | Double Mechanical Seal            |
|                         |                             | Silicon Carbide VS Ceramic/Carbon |
|                         | Bearings                    | C3 Shielded ball bearings         |
| Cable                   | H07BQ-F                     |                                   |
|                         | 10 m or longer upon request |                                   |
| Materials               | Pump Casing                 | Ductile Iron                      |
|                         | Impeller                    | Chromium Iron                     |
|                         | Motor Frame                 | Gray Iron                         |
|                         | Motor Shaft                 | Stainless Steel                   |
|                         | Wear Plate                  | Chromium Iron                     |
|                         | Agitator                    | Chromium Iron                     |
| Strainer                | Carbon Steel                |                                   |
| Max. Liquid Temperature |                             | 40°C (104°F)                      |
| Max. Submersion Depth   |                             | 20 m (66 ft)                      |
| pH Range                |                             | pH 5 - pH 8                       |



|              |     |
|--------------|-----|
| STORMY 4110S | 910 |
| STORMY 6110S | 922 |